



Smart-e

Smart-e (UK) Ltd • Hale House Barns • Oakwoodhill • Ockley • Surrey • RH5 5NA • UK
T +44 (0) 1306 628264 • **F** +44 (0) 1306 628074 • **E** info@smart-e.co.uk • **W** www.smart-e.co.uk

Smart Digital Solutions **VMX-36x36**

**Flexible and comprehensive
Video Wall processor for
Multi-format Video**



The **VMX-36x36** is a professional Video Wall Processing Matrix, capable of selecting between 36 different devices to 36 displays. Seamless switching together with output video scaling provides a professional image selection on any display configuration.

Seamlessly route 36 high resolution video sources to create a Video Wall for up to 36 displays for mixed formats including HDMI, DVI, HDBaseT, Fibre, 3G-SDI & analogue

The **MDX-36x36** chassis offers an unprecedented level of switching, distribution and Video Wall Processing functionality for high resolution HDMI, DVI, HDBaseT and 3G-SDI. Legacy products are also catered for with analogue input cards capable of accepting RGBHV, YPrPb, Y/C and PAL/NTSC all of which can be up-scaled to 1080p resolution.

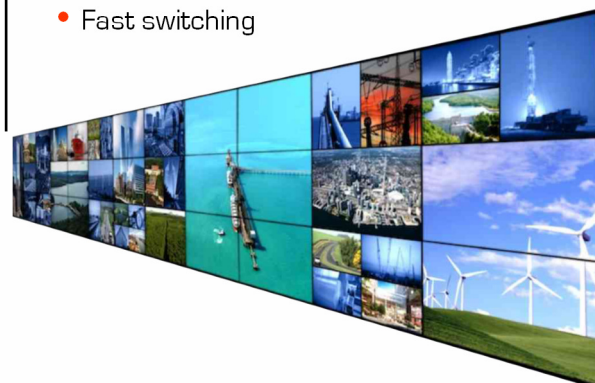
By combining Seamless video switching and processing with modular input and output modules Smart-e sets a new benchmark for complete integrated AV solutions, all of which can be controlled easily via either IP, RS232 and keypad.

Fully HDCP compliant and incorporating enhanced EDID management the matrix is ideal for many multi-channel signal switching and distribution for Commercial, Educational and Residential solutions. Compact 7U 19" rack mounting chassis makes for ease of installation with optional upgrade to SmartiP [extra 1U].

vmX
www.smart-e.co.uk

The Smart-e VMX-36x36 features

- **Multiple output Video Wall Processing**
- HDMI, DVI, HDBaseT, Fibre, VGA & SDI
- HDCP & HDMI 1.4 compliant
- Combined Data rate of 12 Gbits/s
- HDTV 1080p 60Hz 36bpp resolutions
- PC resolutions up to 1920x1200@60 Hz
- **Seamless switching**
- Enhanced EDID management
- Supports Deep Colour (10, 12 & 16 bit)
- Modular construction— 4 port cards
- **Individual output scaling**
- TCP/IP control
- Dual port RS232 control
- **Inline power for receivers (POH)**
- Compact 7U 19" rack mounting
- 3 year warranty
- Sizes ranges from 8x8 to 144x144
- Fast switching





Smart-e

Smart-e (UK) Ltd • Hale House Barns • Oakwoodhill • Ockley • Surrey • RH5 5NA • UK
T +44 (0) 1306 628264 • **F** +44 (0) 1306 628074 • **E** info@smart-e.co.uk • **W** www.smart-e.co.uk

Video

Signal Types	HDMI, DVI, VGA, HDBaseT, 3G-SDI
Formats	1080p @60Hz with 10 & 12 bit Deep Colour, 3D, 4K, 2K & DVI. HDCP compliant, PC up to WUXGA., Analogue RGBHV, YPrPb, Y/C, PAL or NTSC
Content Protection	HDCP V1.3
Connector	HDMI Type A, RJ45, HD15, BNC
Cable Types	CAT 5e, CAT 6/6e, CAT 7, STP, FTP
TV resolutions PC resolutions	480, 576, 720, 1080 p & i, 2K 4K 640x480 through to 1920x1200

Audio & Power

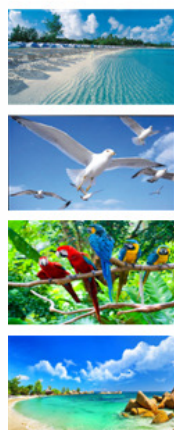
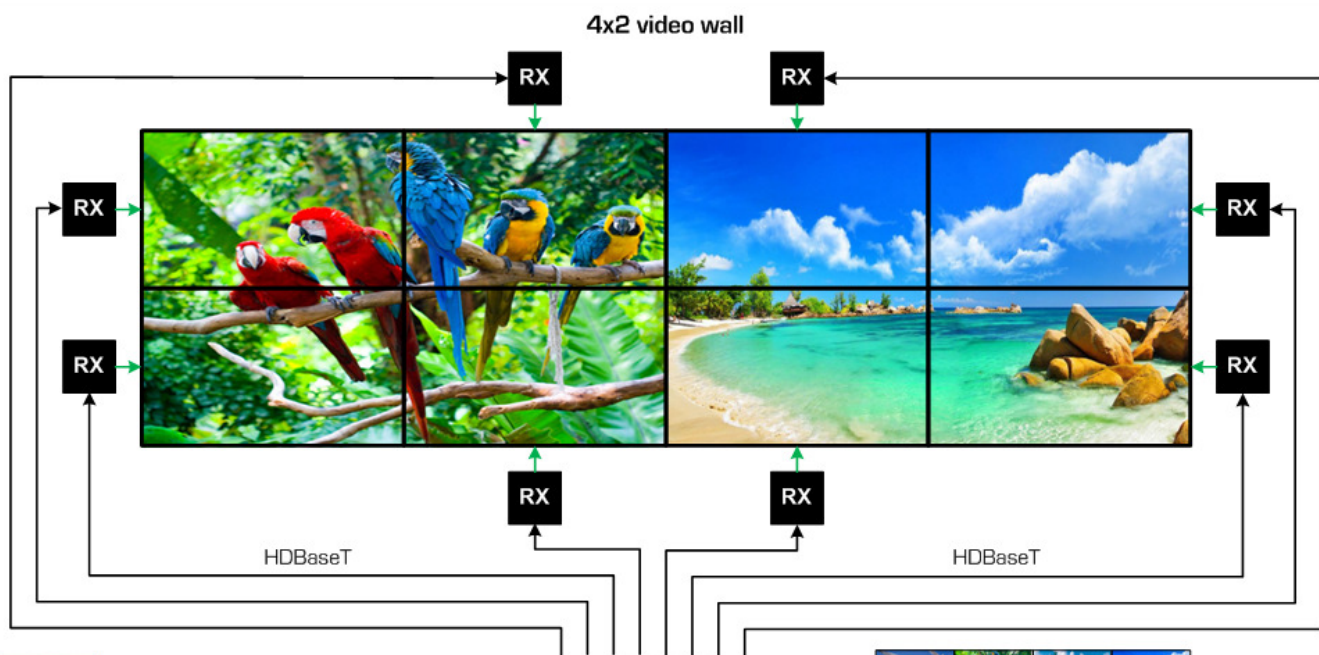
Types	Embedded audio
Digital Formats	Dolby Digital®, Dolby Digital EX, Dolby Digital Plus, Dolby® TrueHD, DTS®, DTS-ES, DTS 96/24, DTS-HD High Res, DTS-HD Master Audio™
Voltage	110-240 AC 50/60 Hz
Connector	IEC
Fuse rating	1 AT
Power	100W

Dimensions

Height	7U
Width	19" rack mounting
Depth	354mm
Weight	15Kg

Control

IP	TCP/IP
IR signal	30-50Hz
RS232	9600 baud: 8 data.1 S, OP
RS232 connector	Sub-miniature D9 socket



32 x HDMI/VGA/
HDBaseT inputs



4x2 video wall

4x2 video wall



4x4 video wall

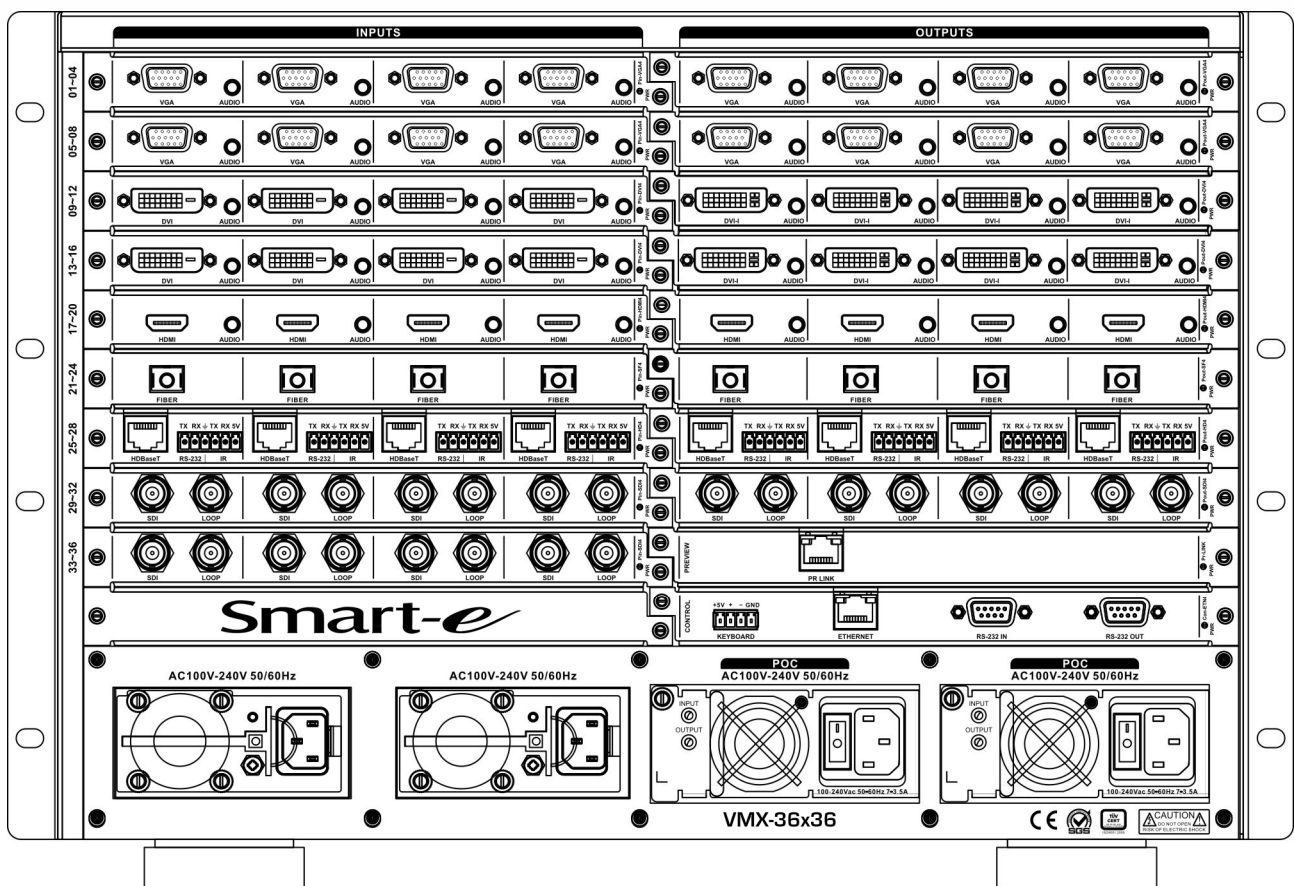
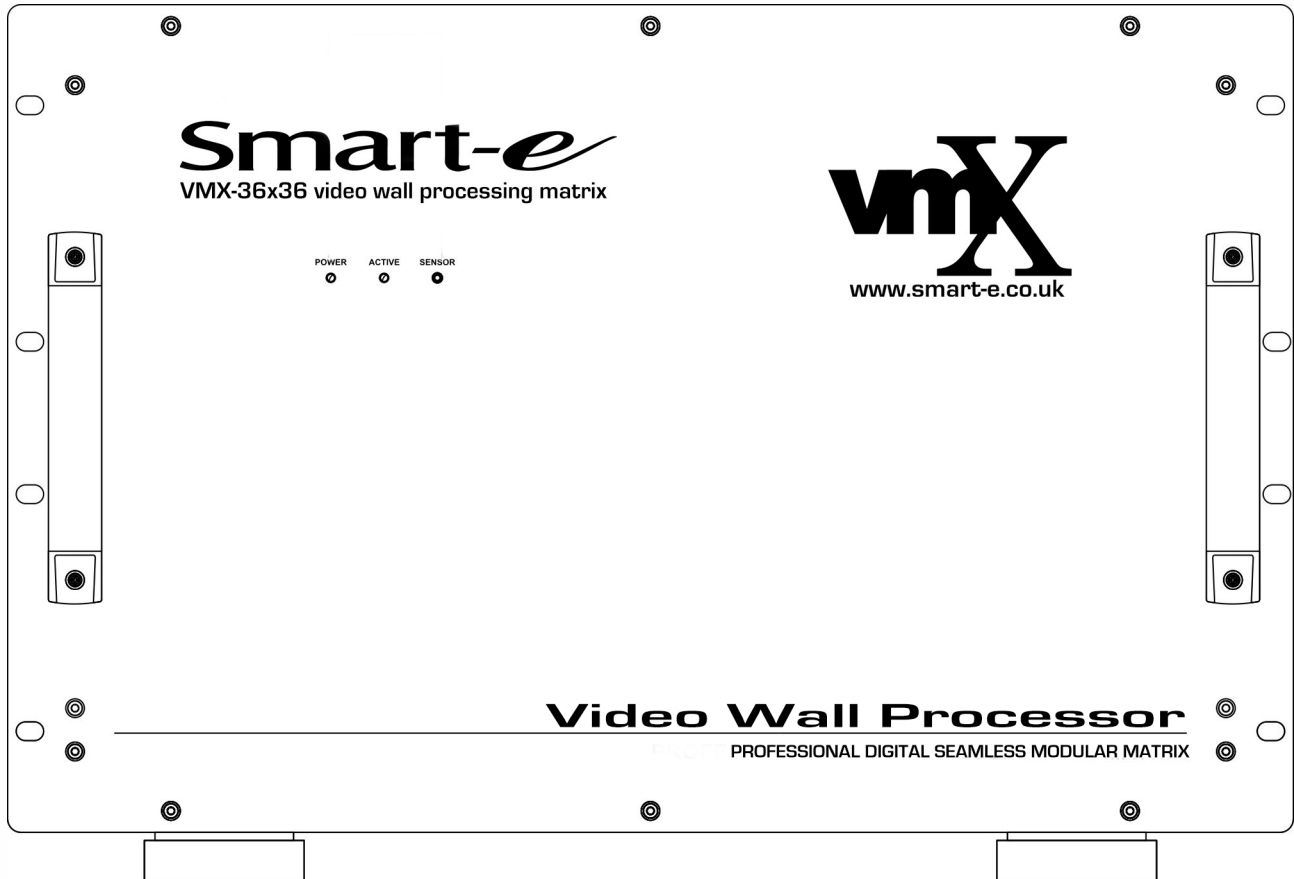
Model No.	Description
VMX-8x8	Modular 8 input by 8 output matrix
VMX-16x16	Modular 16 input by 16 output matrix
VMX-32x32	Modular 32 input by 32 output matrix



Smart-e

Smart-e (UK) Ltd • Hale House Barns • Oakwoodhill • Ockley • Surrey • RH5 5NA • UK
T +44 (0) 1306 628264 • **F** +44 (0) 1306 628074 • **E** info@smart-e.co.uk • **W** www.smart-e.co.uk

Panel drawings





Smart-e

Smart-e (UK) Ltd • Hale House Barns • Oakwoodhill • Ockley • Surrey • RH5 5NA • UK
T +44 (0) 1306 628264 • **F** +44 (0) 1306 628074 • **E** info@smart-e.co.uk • **W** www.smart-e.co.uk

Input cards

VMX-IP4-HDMI



- Provides 4x independent HDMI [Type-A] inputs
- HDMI 1.4, DVI 1.0 & HDCP 1.3 protocol
- Supports EDID editing function
- Maximum input resolution:
1920x1200p @ 60Hz 24bit, 1080p @ 60Hz 36bit

VMX-RX4-HDBT



- Provides 4x independent HDBaseT inputs
- Compatible with HDBaseT protocol
- Supports EDID editing function
- Maximum input resolution:
1920x1200p @ 60Hz 24bit, 1080p @ 60Hz 36bit

VMX-RX4-FB



- Provides 4x independent SC optical fibre inputs
- Multimode 850nm <300m
- Supports EDID editing function
- Maximum input resolution:
1920x1200p @ 60Hz 24bit, 1080p @ 60Hz 36bit

VMX-IP4-DVI



- Provides 4x independent DVI inputs
- HDMI 1.4, DVI 1.0 & HDCP 1.3 protocol
- Supports EDID editing function
- Maximum input resolution:
1920x1200p @ 60Hz 24bit, 1080p @ 60Hz 36bit

VMX-IP4-VGA



- Provides 4x independent Analogue [HD15] inputs
VGA/RGBHV, YPbPr, Y/C S-video, Composite-video
(using adapter cable)
- Maximum input resolution: 1920x1200p @ 60Hz
24bit, 1080p @ 60Hz 36bit
- Digitises and up-scales input resolution
≤1920x1080p @ 60Hz

Output cards

VMX-OP4-HDMI



- Provides 4x independent HDMI [Type-A] outputs
- HDMI 1.4, DVI 1.0 & HDCP 1.3 protocol
- Maximum output resolution:
HDCP: 1920x1200p @ 60Hz 24bit
HDTV: 1920x1080p @ 60Hz 36bit (HD1080p60)

VMX-TX4-HDBT



- Provides 4x independent HDBaseT outputs
- Compatible with HDBaseT protocol
- Maximum output resolution:
HDCP: 1920x1200p @ 60Hz 24bit
HDTV: 1920x1080p @ 60Hz 36bit (HD1080p60)

VMX-TX4-FB



- Provides 4x independent SC optical fibre outputs
- Multimode 850nm <300m
- Maximum output resolution:
HDCP: 1920x1200p @ 60Hz 24bit
HDTV: 1920x1080p @ 60Hz 36bit (HD1080p60)

VMX-OP4-DVI



- Provides 4x independent DVI outputs
- HDMI 1.4, DVI 1.0 & HDCP 1.3 protocol
- Maximum output resolution:
HDCP: 1920x1200p @ 60Hz 24bit
HDTV: 1920x1080p @ 60Hz 36bit (HD1080p60)



Smart-e

Smart-e (UK) Ltd • Hale House Barns • Oakwoodhill • Ockley • Surrey • RH5 5NA • UK
T +44 (0) 1306 628264 • **F** +44 (0) 1306 628074 • **E** info@smart-e.co.uk • **W** www.smart-e.co.uk

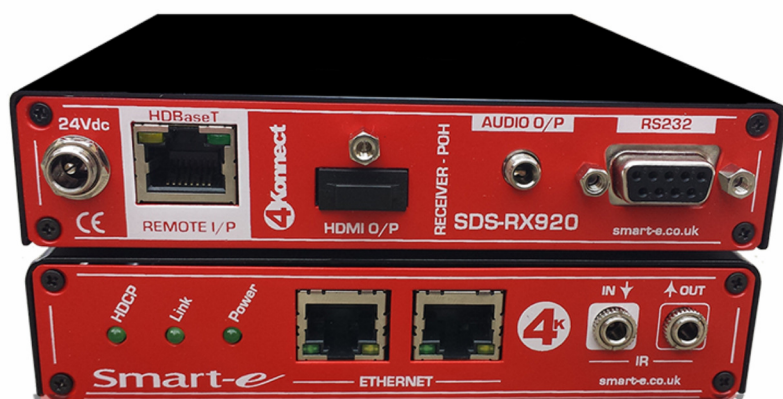
Smart Digital Solutions **SDS-RX920**

Flexible and cost effective HDBaseT 100 m receiver with integral audio de-embedder



The Smart-e SDS-RX920 features

- HDMI V1.3a & DVI V1.0
- Deep Colour
- 100m of CAT5e-8 STP cable
- HDCP V1.3 compliant
- Audio de-embedder
- HDMI output
- 100BaseT Ethernet passthrough
- Supports 1920x1200 @ 60 Hz
- Wide bandwidth IR transmission
- Analogue audio output
- Transparent RS232 pass-through
- Secure HDMI connector
- Convenient fixing holes
- Cost effective, multi-function unit



The **SDS-RX920** is a HDBaseT receiver unit designed to accept a Cat 6 input and output a HDMI signal together with bi-directional infrared and RS232 signals over a single twisted pair CAT 5e-8 cable. The units use HDBaseT technology to extend PC resolutions up to 1920x1200 @60Hz together with 1080p @60Hz. In addition the **SDS-RX920** will also de-embed the audio within the HDMI transmission.

HDBaseT receiver for HDMI, IR and RS232 over a single 100m of CAT 5e-8 cable together with analogue audio output

The **SDS-RX920** is a robust professional product designed for reliability and functionality. The unit meets all the HDBaseT specifications as a receiving device together with an audio extractor function.

The internal digital audio within the HDMI signal is de-embedded and then converted to an analogue stereo audio using a high quality Digital to Analogue converter (DAC), the signal is then presented on a 3.5mm stereo jack socket.

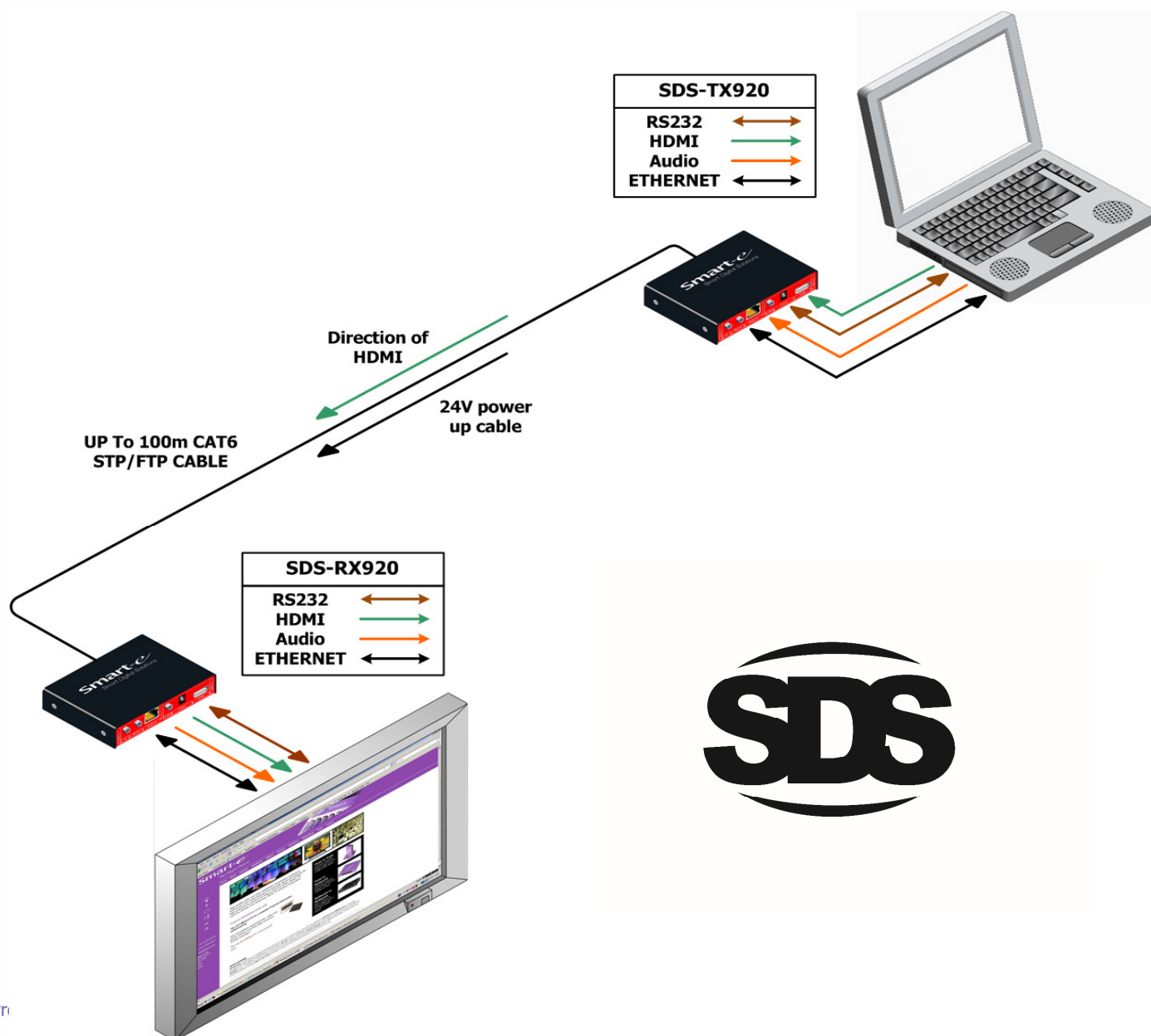
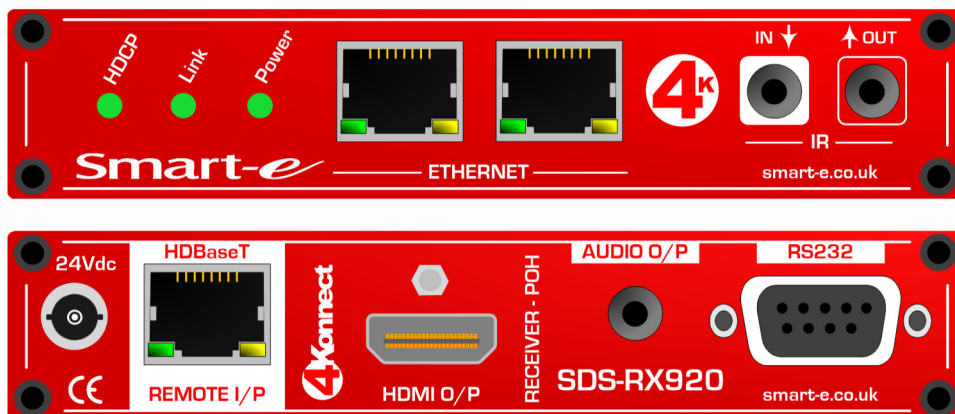
Wide band Infra-Red via external adapters (SM-EYER & SM-LED) and RS232 signals are extended through the same CAT 5e-8 cable between the transmitter and receiver unit up to 100m of cable. Each box has fixing holes to facilitate ease of installation and multiple units can fit side by side on a 1U 19" rack shelf.

The SDS-900 range from Smart-e provides a flexible and cost effective solution for point to point transmission for a single source to a single display



SDS-RX920

Front and rear panel connections





Smart-e

Smart-e (UK) Ltd • Hale House Barns • Oakwoodhill • Ockley • Surrey • RH5 5NA • UK
T +44 (0) 1306 628264 • **F** +44 (0) 1306 628074 • **E** info@smart-e.co.uk • **W** www.smart-e.co.uk

SDS-RX920 Specification

Digital Video

Signal Types	HDMI, DVI, DisplayPort Multimode
Formats	HDMI V1.3a DVD V1.0 Deep Color
Content Protection	HDCP V1.3
Connector	HDMI Type A Female or DVD-D
Bandwidth	2.25Gbps each colour
TV resolutions PC resolutions	480, 576, 720, 1080 p & i @60Hz 640x480 to 1920x1200 @60Hz

Digital Audio

Types	Embedded audio in HDMI
Formats	Dolby Digital® Plus Dolby® TrueHD DTS-HD High Res DTS-HD Master Audio™, up to 8chPCM
Connector	HDMI

Analogue Audio

Type	Analogue stereo
Bandwidth	20-20kHz
Impedance	51R output
Signal level	2V RMS (max)

Power

Voltage	24V DC POH
Connector	2.1mm DC jack
Max. current	500mA per unit
Power	11.5Watts

Dimensions

Height	34mm
Width	165mm
Depth	195mm with mounting ears
Weight	100g

Control

IR signal	38kHz
IR connector	3.5mm jack socket
RS232	<115Kbaud
RS232 connector	3.5mm jack socket



made in the UK by

Smart-e